

# Laser Scan to BIM

The need to capture existing real-world conditions in a digital format has become increasingly more vital across all industries. ECAD provides the knowledge and expertise needed to deliver an intelligent model of accurate existing conditions in a timely manner to meet your project deadlines.

## **CHOOSE FROM TWO OPTIONS:**

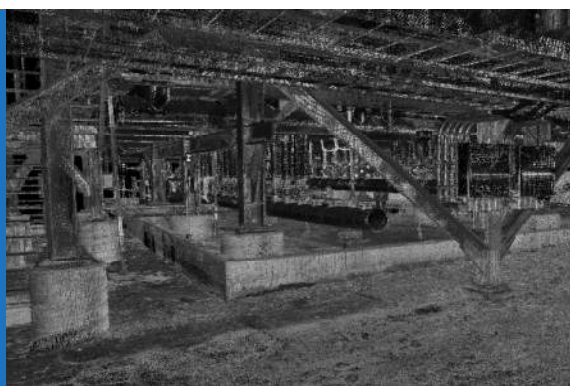
### **Turn-Key Option**

1. Laser Scan
2. Register Data
3. Deliver 3D Model



### **Back-Model Option**

You provide the completed laser scans and we deliver the 3D model.



## KEY BENEFITS



### Facility Management

An intelligent model can be a more cost-effective means of facility maintenance and serves as a single source of accurate information that helps reduce change orders, schedule interruptions, and eliminates the need of constantly traveling to the site or facility.



### Engineering

Get fast and accurate measurements for existing pipe, steel structures, foundations and utilities.



### Construction

Capture the site conditions for utility clearances. Field check the design.



### Architecture, Historical

Scan to BIM for clash detection. Analyze historical structures for restoration.



## DELIVERABLES

2D DWG  
Mesh Model  
AutoCAD Overlay  
CADWorx  
Advance Steel  
Revit  
Inventor  
SolidWorks  
Civil 3D  
Navisworks  
Recap File  
VR Executables  
Animations

